

RESOLUTION NO. 11-2017

Authorizing an Amendment to the Final Development Plan for 350 E. Wilson Bridge Road and Authorizing a Variance (IDEXX Laboratories, Inc.).

WHEREAS, IDEXX Laboratories, Inc. has submitted a request for an amendment to the Final Development Plan for 350 E. Wilson Bridge Road; and,

WHEREAS, Sections 1175.02 (f) and 1107.01 of the Codified Ordinances of the City of Worthington provide that when an applicant wishes to change, adjust or rearrange buildings, parking areas, entrances, heights or yards, following approval of a Final Development Plan, and variances are included, the modification must be approved by the City Council; and,

WHEREAS, the proposal has received a complete and thorough review by the Municipal Planning Commission on March 23, 2017 and approval has been recommended by the Commission.

NOW, THEREFORE, BE IT RESOLVED by the Council of the Municipality of Worthington, County of Franklin, State of Ohio:

SECTION 1. That the amendment to the approved Final Development Plan at 350 E. Wilson Bridge Road as per Case No. ADP 02-17, Drawings No. ADP 02-17 dated March 8, 2017 attached hereto as Exhibit "A" be approved.

SECTION 2. That there be and hereby is granted a variance from Code Section 1170.02(f), to allow for the display area, above grade height, and total sign area to exceed the allowable in the Code on a freestanding monument sign.

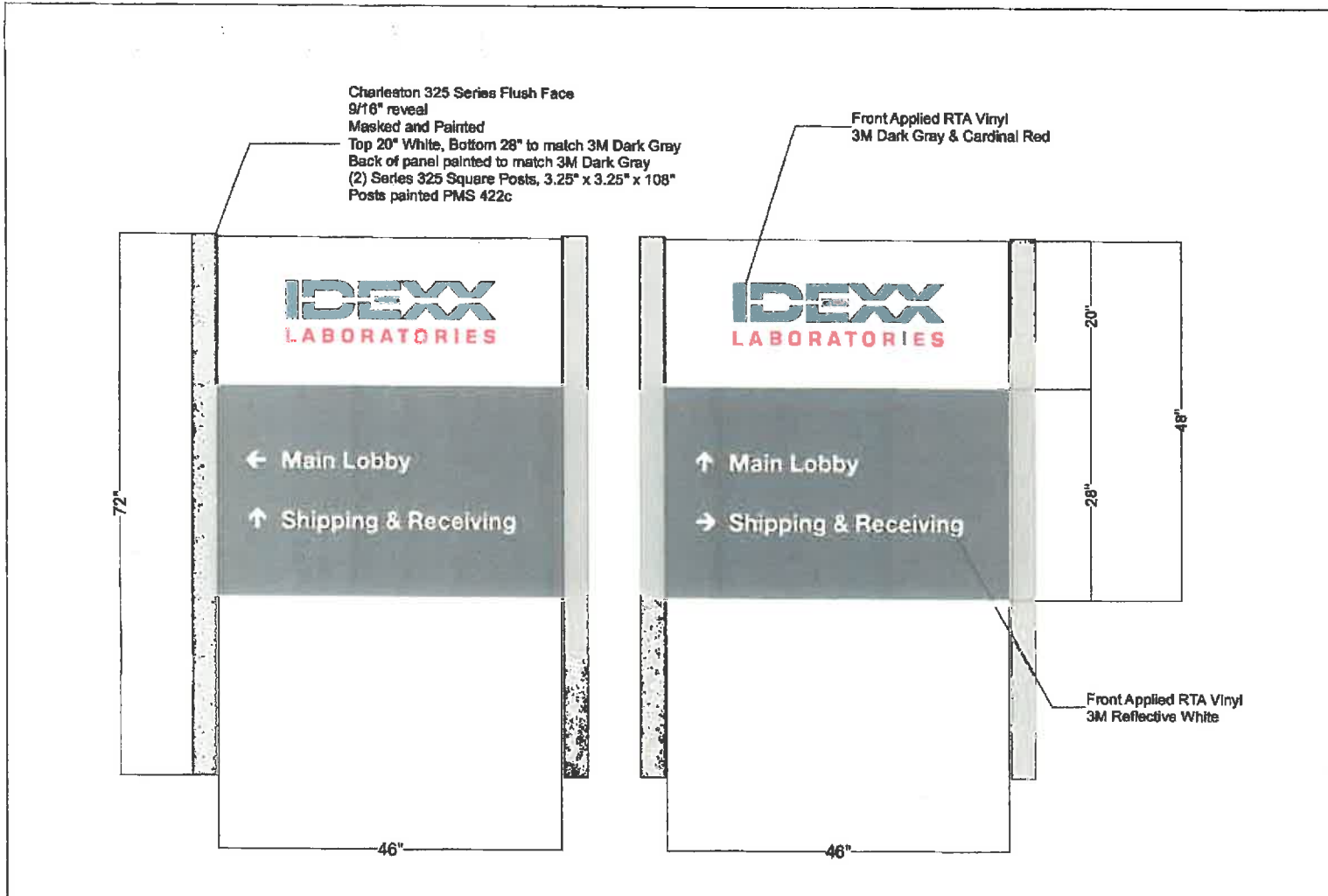
SECTION 3. That the Clerk of Council be and hereby is instructed to record this Resolution in the appropriate record book.

Adopted April 3, 2017

/s/ W. Scott Myers
President Pro-Tem of Council

Attest:

/s/ D. Kay Thress
Clerk of Council



NON-ADA JOB SPECIFICATIONS

Job Name: IDEXX	
Job #: 24924	
Customer Name: IDEXX	
Scope: Post & Panel Signs	
Sales Rep: JP	Drawn By: ad
Revision #:	
Sign Type:	
Date: 02.01.2017	
File Location: IDEXX_24924	

SIGN PANEL

Face: Charleston 325 Series (see drawing)
Edges: Straight
Corners: Square
COLOR: 1st Surf: White, Dk. Gray (see dwg)
2nd Surf: NA
Insert: NA
Vinyl Color: 3M Dk Gray, Cardinal Red, Reflective White
2nd Layer: NA
COLOR: 1st Surf: NA
2nd Surf: NA
Slides: Single

GRAPHIC CONTENT

Process: Front Applied RTA Vinyl
TEXT/COPY: Height: as drawn
Style: as drawn
Color: see dwg

MOUNTING

Hardware: Charleston 325 Series	
Holes: NA	Location: NA
Mount Location: TBD	
Tape: NA	
Wall Surface: NA	
Glass Backer mat: NA	Color: NA

FRAME

Type: NA
Size: NA
Color: NA

CHECKED FOR PRODUCTION DRAWINGS MARKED PAPER ONLY
ad

PRODUCTION DRAWINGS & JOB SPECIFICATIONS HAVE BEEN CHECKED BY SALES PERSON FOR ACCURACY.
ad

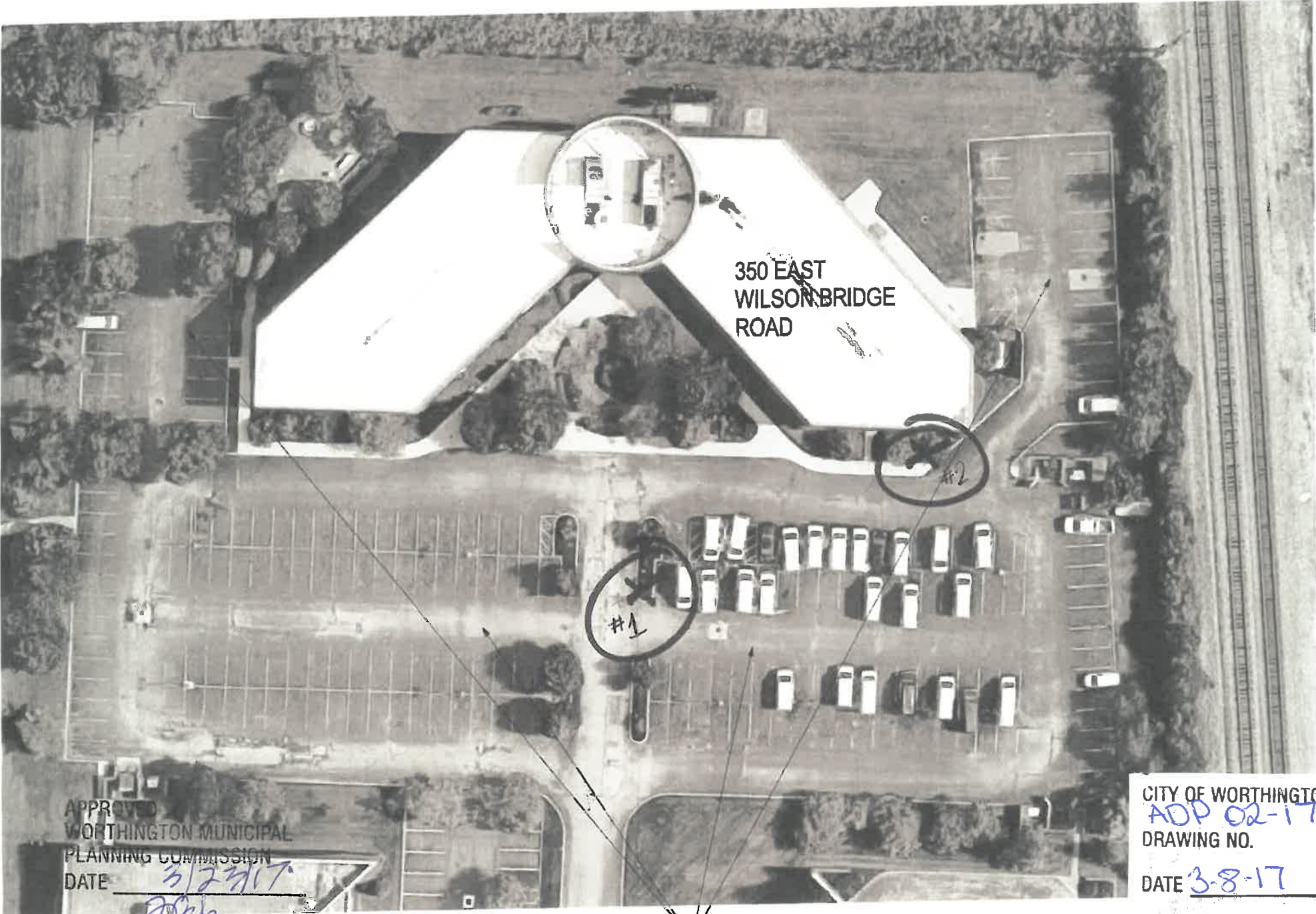
Signature: _____ Date: _____

APPROVED
WORTHINGTON MUNICIPAL
PLANNING COMMISSION
DATE 3/23/17
ad

CITY OF WORTHINGTON
ADP 02-17
DRAWING NO.
DATE 3.8.17

Approved by: _____ CLERK OF COMMISSION Date: _____

EXHIBIT "A"



350 EAST
WILSON BRIDGE
ROAD

#1

#2

APPROVED
WORTHINGTON MUNICIPAL
PLANNING COMMISSION
DATE 3/23/17

[Signature]

CLERK OF COMMISSION

EXISTING PARKING
AREAS TO REMAIN

CITY OF WORTHINGTON
ADP 02-17
DRAWING NO.

DATE 3-8-17

2

EXISTING site plan
ADP 02-17