

ZONING MAP CITY OF WORTHINGTON, OHIO

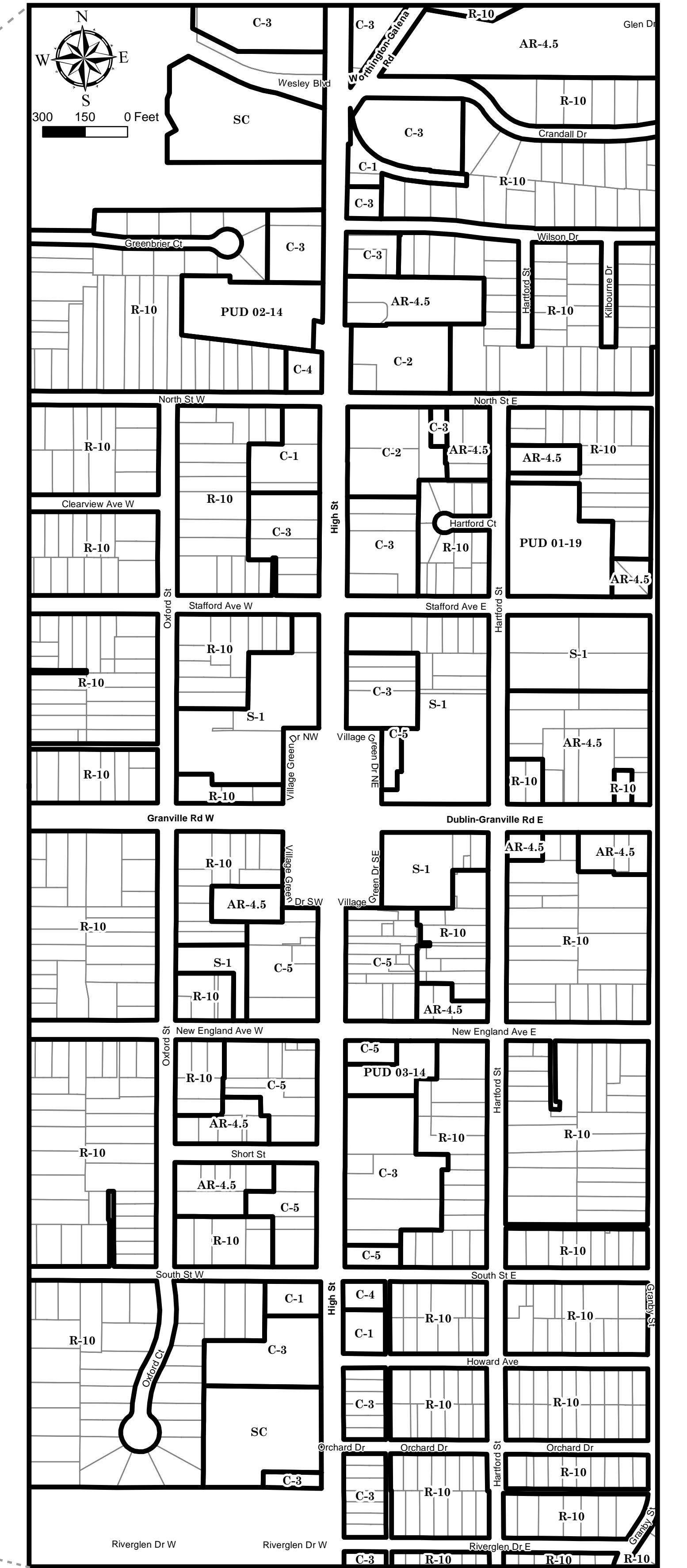
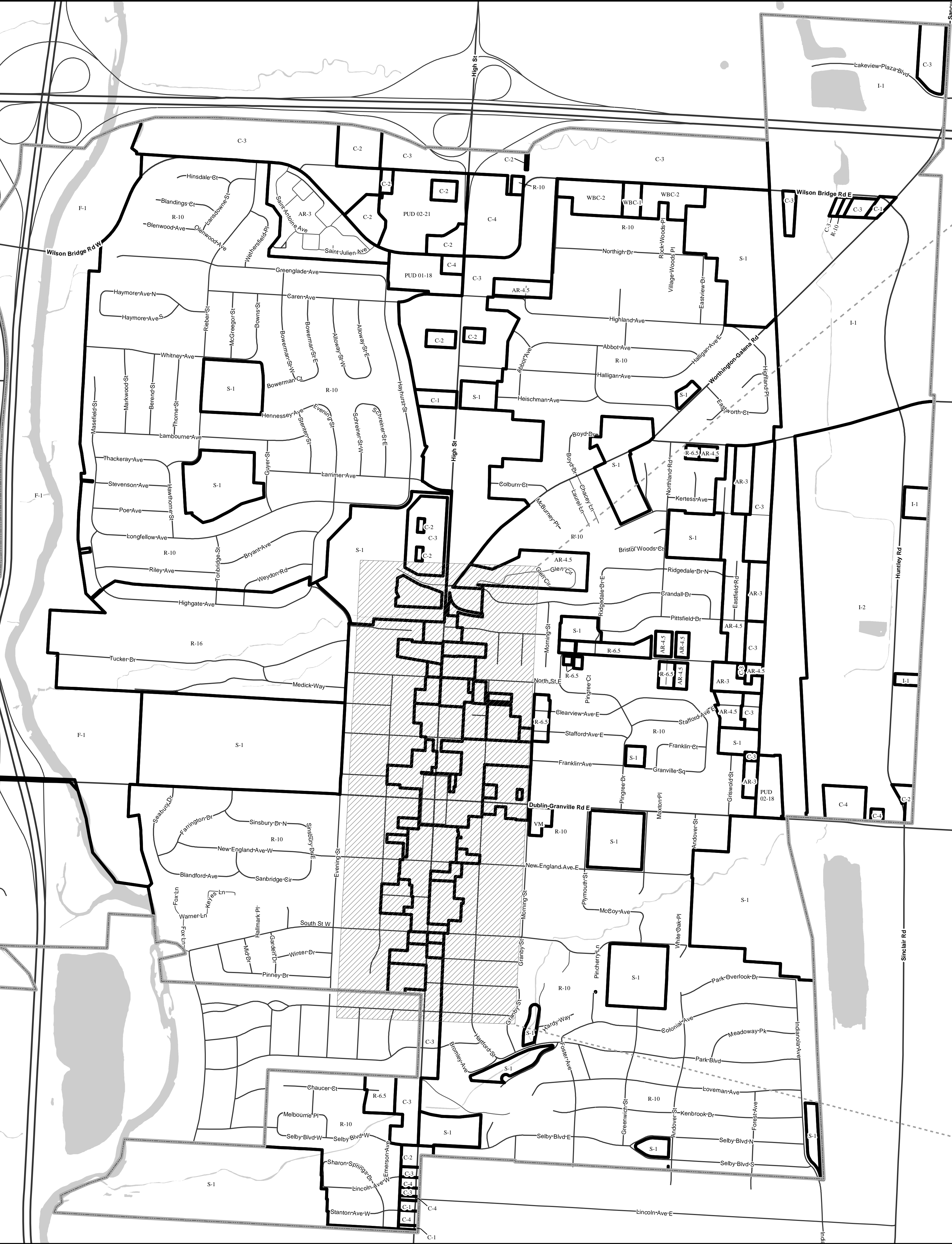
Zoning Districts

OPEN AREA	F-1	Flood Plain
	S-1	Special
	VM	Veterans Memorial
RESIDENTIAL	R-16	Very Low Density Residential
	R-10	Low Density Residential
	R-7.5	Medium Density Residential
	R-6.5	One and Two Family Residence
	AR-4.5	Low Density Apartment Residence
	AR-3	Medium Density Apartment Residence
	SC	Senior Citizen
COMMERCIAL	C-1	Neighborhood Commercial
	C-2	Community Shopping Center
	C-3	Institutions and Offices
	C-4	Highway and Automotive Services
	C-5	Central Commercial
INDUSTRIAL	I-1	Restricted Industrial: Research and Offices
	I-2	General Industrial



Zoning Districts

WILSON BRIDGE CORRIDOR	WBC-1	Medium Density Residential
	WBC-2	Professional Office
	WBC-3	Mixed Use
	WBC-4	Office
PLANNED UNIT DEVELOPMENT	PUD	Planned Unit Development



This is a reproducible version of the official zoning map located at the City of Worthington Municipality Building, 6550 N High St.