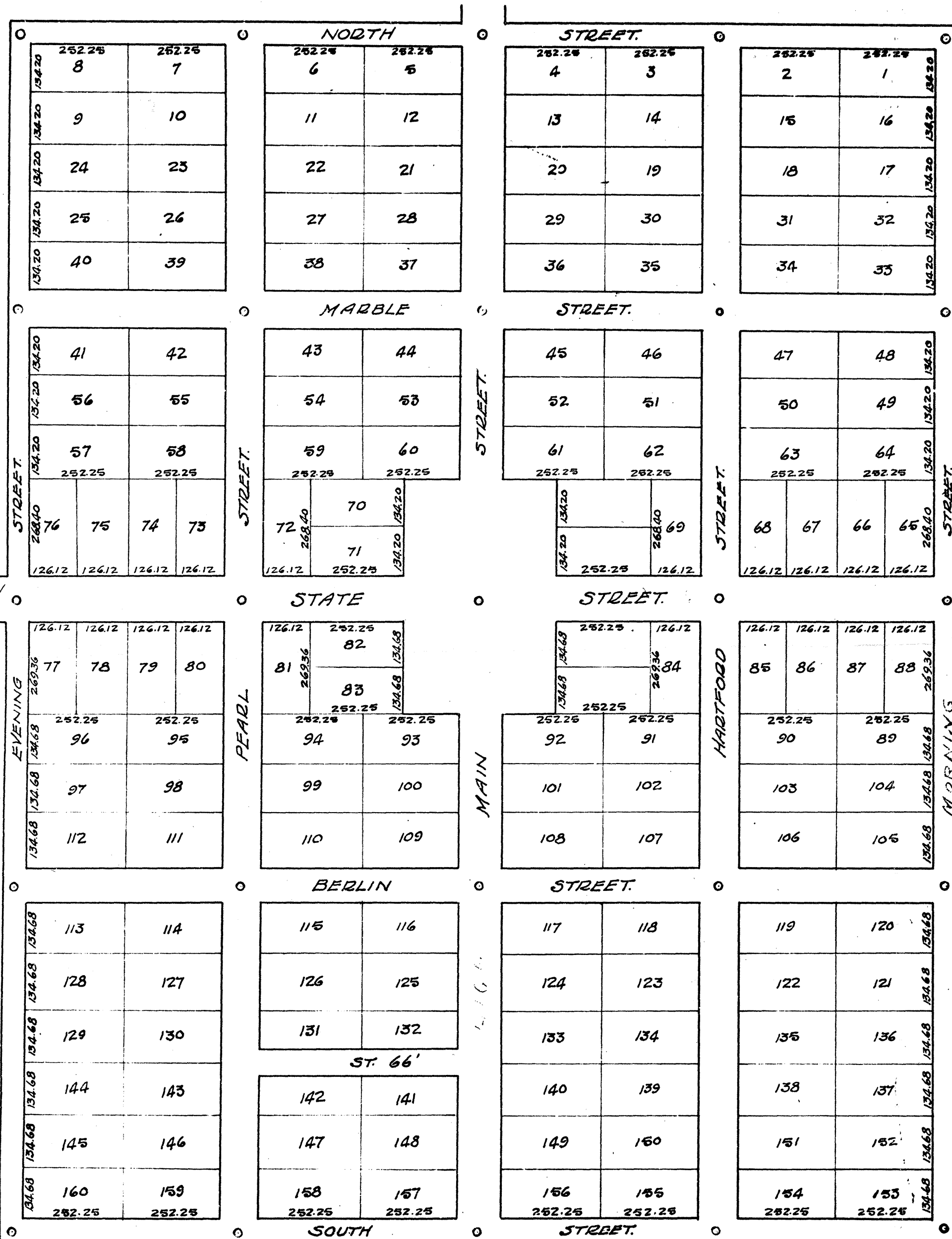


# WORTHINGTON



3153.48

2348

### ORIGINAL RECORD

Lots 8 by 1/2 Rods - Except Lots 65-66-67-68-69-72-73-74-75-76-77-78-79-80-81  
84-85-86-87-88 which are 7/2 by 16 Rods.

Resurvey - Ratio of Excess	North from State St.	$\frac{1666}{100000}$
	South do do	$\frac{200}{10000}$
	West do Main St	$\frac{192}{10000}$
	East do do	$\frac{192}{10000}$

### Note

Main and State Sts. 6 Rods wide. 99'  
Interior do 4 do. 66'  
Exterior do 3 do. 49.5'

Surveyed and Platted Oct 8<sup>th</sup> 1874.

B. F. Bower, Surveyor, Franklin County, Ohio.  
Recorders Office, Franklin County, Ohio.

Filed for Record December 10<sup>th</sup> 1883 at 9 o'clock A.M.

Recorded December 11<sup>th</sup> 1883. F. M. Senter Recorder.

(Reduced 1/2)